

\$5.00 NOVEMBER 2016

QUEST

THE
REAL ESTATE
ISSUE

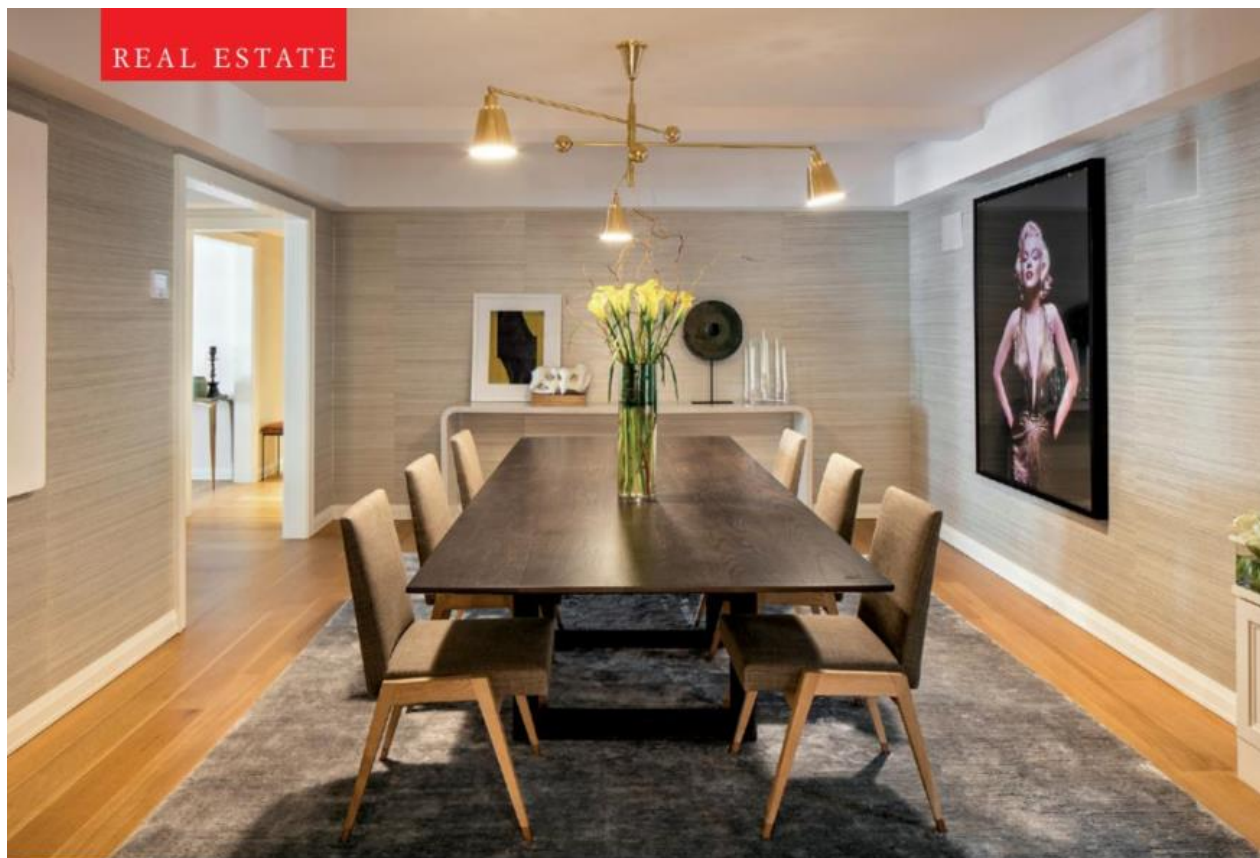


ELYSEE MIAMI
OVERLOOKING THE SHORE
OF BISCAYNE BAY



questmag.com

¡HOLA MIAMI!



12 EAST 88TH STREET

ACROSS THE STREET from Central Park, around the corner from The Guggenheim, on a tree-lined street, in the heart of Carnegie Hill, stands 12 East 88th street, a 13-story, prewar gem designed by New York's preeminent architect, Rosario Candela. In keeping with the character of this elegant New York neighborhood, the residences at 12 East 88th street have been loving-restored by world-renowned architectural firm Champalimaud. Defined by its gracious one-to-five-bedroom layouts, 12 East 88th street offers a rare opportunity to own a condominium in a classic Candela prewar.

"This is a rare opportunity to own a Candela residence in a condominium building on the Upper East Side. People who buy in Candela buildings have an

appreciation for New York history and understated elegance," said Jonathan Simon of Simon Baron Development. "Carnegie Hill is one of the last intact residential neighborhoods in New York; it's at the heart of Museum Mile, and it is also the home to some of the most sought-after private schools in New York. We brought in Douglas Elliman Development Marketing because we knew that they understood the significance of the building and the neighborhood. We also knew that the sales team—Barbara Russo, Jared Seligman and Katherine Gauthier—were the best qualified for this project; they are amongst the most experienced real estate professionals in the industry."

"After a complete analysis of the building and buyer demographics, we are

pleased to serve as the exclusive sales and marketing firm for the launch of sales at 12 East 88th Street," said Susan de França, President and Chief Executive Officer at Douglas Elliman Development.

"Backed by our network, knowledge and expertise—Elliman served as the brokerage and management company on transactions at the property dating back to the 1920s—we look forward to the continued success of the project as we guide the storied building into the next chapter," added Executive Vice President Karen Mansour.

"Carnegie Hill is a rarity in the city because it offers a true sense of community," added Russo. ♦

For more information about 12 East 88th Street, please visit 12e88st.com.



This page, clockwise from top left: The classic Candela prewar building features sumptuous kitchens designed by Champalimaud; the façade of 12 East 88th Street; each residence is adorned with elegant finishes and appointments throughout, as seen here in the living room; the library. Opposite page: The historic building contains modern finishes.

